

VPN (Virtual Private Network) with Fedora Linux



Dustin Graham

2010-03-05 14:26

Abstract

Describes a technique for secure connections to the TCC from remote hosts.

This publication is available in Web form¹ and also as a PDF document². Please forward any comments to tcc-doc@nmt.edu.

Table of Contents

1. Overview: A remote access method for Linux	1
2. Installation	1
3. Connecting	4
4. Closing the connection	5

1. Overview: A remote access method for Linux

This document describes how to install a PPTP client on a Fedora Core or Ubuntu system. This client allows you to connect to a remote system reliably and securely.

This connection is sometimes referred to as a *tunnel* to the remote system.

2. Installation

1. Install the NetworkManager PPTP plugin and its dependencies.

- For Fedora:

```
sudo yum install NetworkManager-pptp
```

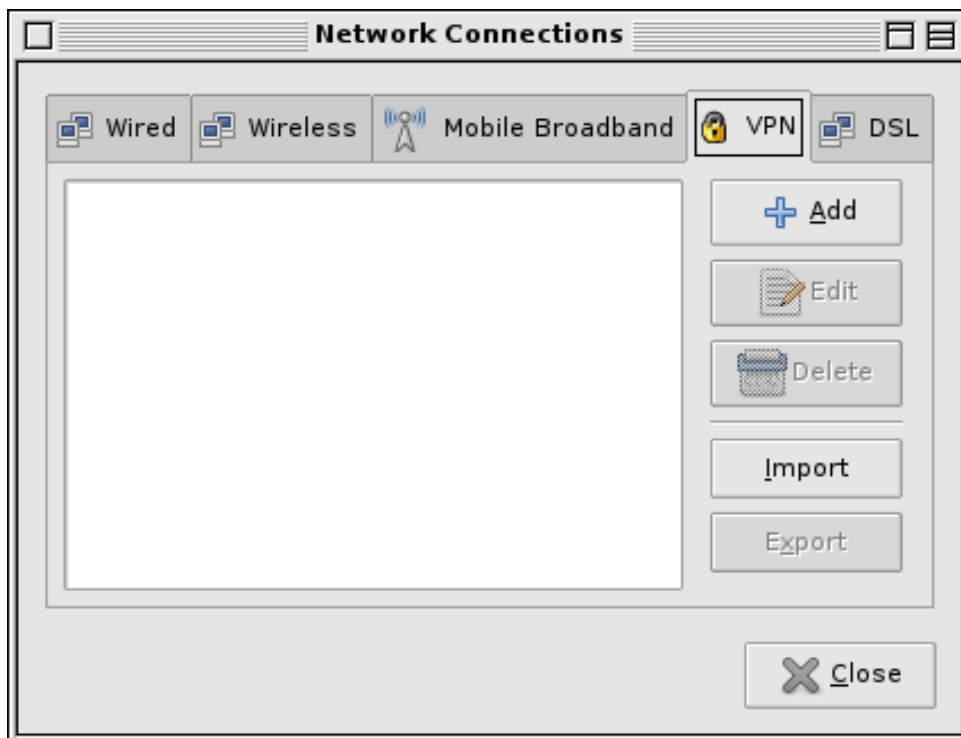
- For Ubuntu:

```
sudo apt-get install network-manager-pptp
```

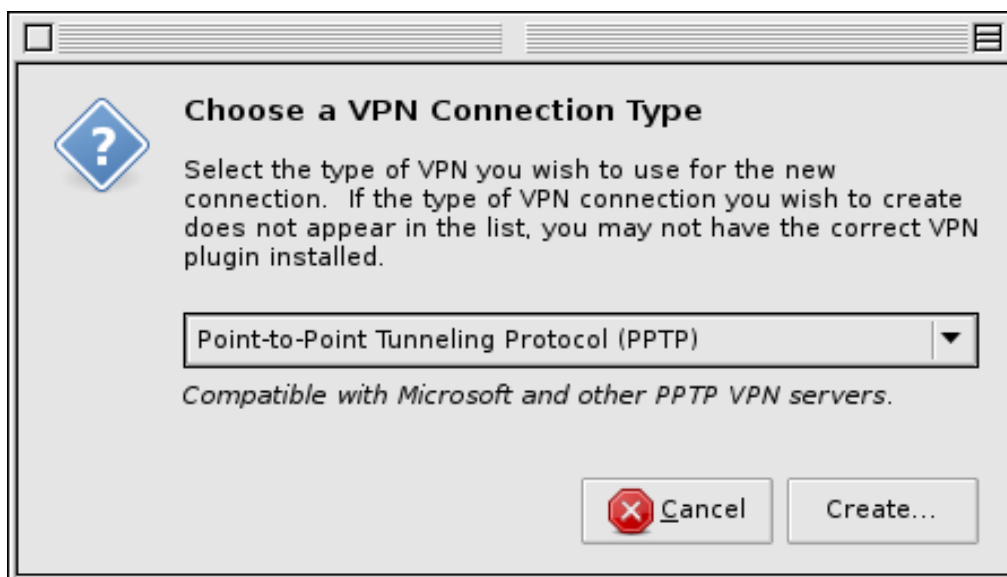
2. Click the *NetworkManager applet*, then choose *VPN Connections >* and *Configure VPN...*
3. Click the *Add* button in the *VPN Connections* window to create a new connection.

¹ <http://www.nmt.edu/tcc/help/pubs/vpnfedora/>

² <http://www.nmt.edu/tcc/help/pubs/vpnfedora/vpnfedora.pdf>



4. A dialogue appears asking which type of connection to create; choose *Point-to-Point Tunneling Protocol (PPTP)* from the selection menu.



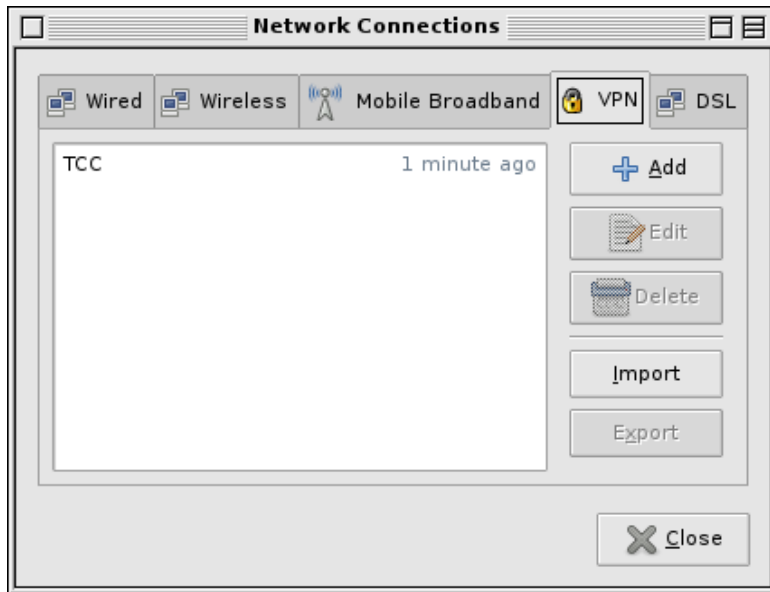
5. The connection editor will open. Put "TCC" in the *Connection name:* field, "vpn.nmt.edu" *Gateway:* field, and your TCC account name in the *User name:* field.



6. Click the *IPv4 Settings* tab to switch to that pane. From the *Method:* pulldown menu, select *Automatic (VPN) addresses only*, and enter "129.138.4.138" in the *DNS Servers:* field.



- Click the *Apply* button to save your new connection, then the *Close* button to shut the *Network Connections* window.



- Log out of your X session, then log in again. This forces the NetworkManager applet to load your new configuration.

3. Connecting

To make a VPN connection to the TCC:

- Click the *NetworkManager* applet, then choose *VPN Connections >* and *TCC* (your new connection).
- Enter your TCC password in the *Authenticate VPN* dialogue, then click the *OK* button.



Once you have opened your VPN tunnel, your machine is effectively on the TCC network. You can use TCC machines in these ways, and more:

- To log in to a TCC system, use this command:

```
ssh hostname
```

where *hostname* is the name of the system, such as `rainbow`.

- Your Web browser can access any Web page on the Internet.
- You can transfer files with *sftp* (Secure File Transfer Protocol) or *scp* (Secure Copy). See the `man` pages for *sftp*³ and *scp*⁴.

4. Closing the connection

To disconnect, click the *NetworkManager* applet, then choose *VPN Connections >* and *Disconnect VPN...*

³ <http://www.nmt.edu/tcc/cgi/manweb.cgi?p=sftp>

⁴ <http://www.nmt.edu/tcc/cgi/manweb.cgi?p=scp>

